



Designer Finished Homes

THE JUNIPER

T83-76 | 1,583 SQ. FT.

eQuinelle



eQuinelle



The Juniper is a warm and welcoming two-storey townhome. Featuring 3 large bedrooms, this 1,583 sq. ft. home also has a 230-sq. ft. finished basement, perfect for a playroom or family theatre. On the second floor, the primary retreat includes a luxurious ensuite and oversized walk-in closet, with a convenient second-floor laundry room just down the hall. Big and bright, this home is illuminated with natural light and has a beautiful lush lookout view.



Artist's concept. E.&O.E.

eQuinelle



Designer Finished Homes

THE JUNIPER

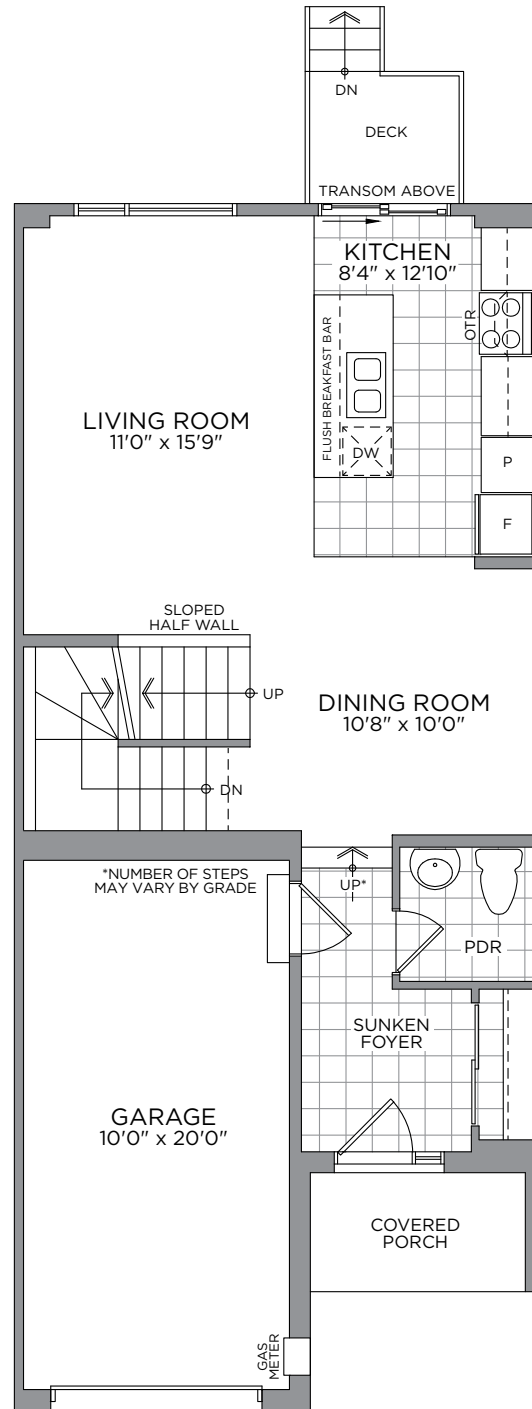
T83-76 | 1,583 SQ. FT.

(LOOK-OUT LOT)

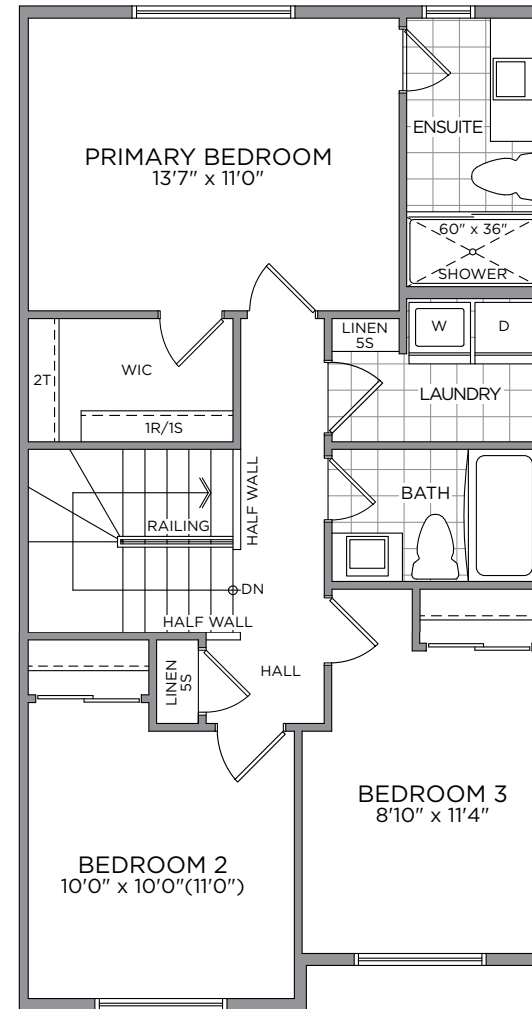


Artist's concept. E.&O.E.

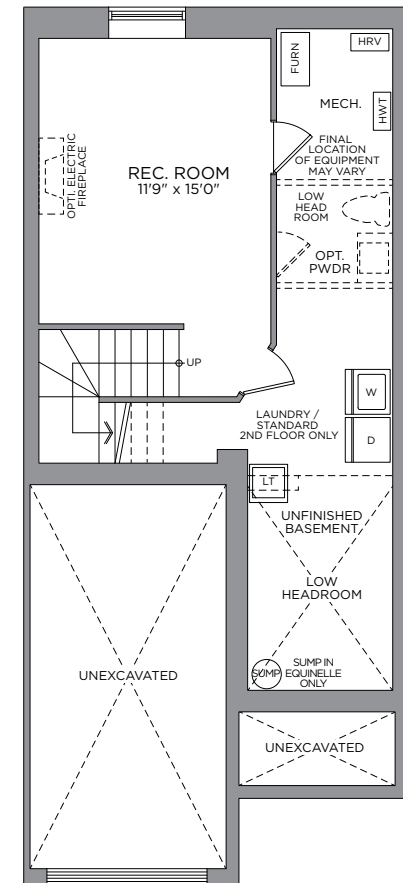
All drawings are artist's concept and may vary slightly from the final product. Actual usable floorspace may vary from stated area, and square footage has been calculated based on usable living space according to the TARIION rules and does not include garage or unfurnished basement areas. Drawings may show optional features which may not be included in the base price. Bulkheads & box outs may be required as chases for plumbing & mechanical. Garage main door location, if applicable, may vary subject to grade. Specifications subject to change without notice. Manufacturers' images are shown and may differ from the final product. E. & O.E. September 2023.



GROUND FLOOR



SECOND FLOOR



BASEMENT



OUR COMMUNITY

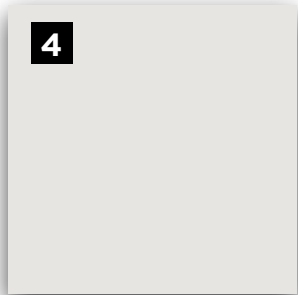


THE COMMUNITY
SITE PLAN



MAKE A GRAND ENTRANCE WITH AN
EXQUISITE DOOR HARDWARE,
FLOOR & TRIM PACKAGE

INTERIOR DETAILS



E.&O.E.

1
MAIN ENTRY TILE
Centura 13x13
Explorer -
Barcelona

2
HARDWOOD FLOORING
Lauzon Décor Smooth Ultra
Matte - Red Oak 3- 1/8" x
3/4" - Carmelo

3
CARPET
Beaulieu
Sultana II -
Tender Taupe

4
**INTERIOR
PAINT**
Benjamin
Moore - Calm

5
**INTERIOR DOOR
HARDWARE**
Layton Satin
Chrome Levers

6
TRIM PACKAGE
Baseboard 5706A,
Casing 7705, Shoe
Mould 101

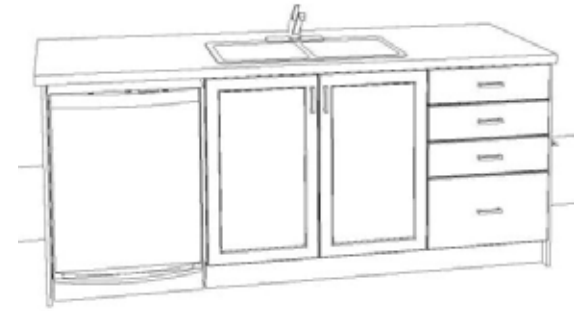
7
INTERIOR DOORS
Cambridge
2-Panel Square
Top Smooth Doors

A GREAT RECIPE STARTS WITH A
GOURMET CHEF KITCHEN

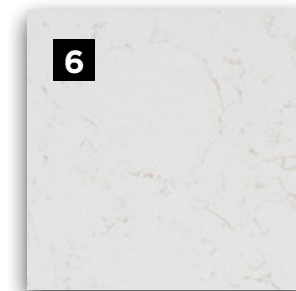
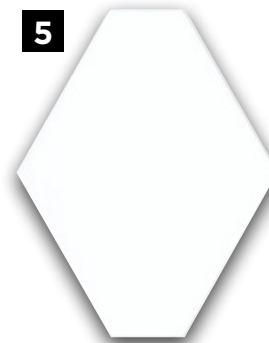
KITCHEN



KITCHEN CABINET & ISLAND LAYOUT



E.&O.E.



E.&O.E.

1
HOOD FAN
GE Stainless Steel
OTR Microwave
Hood

2
KITCHEN SINK
Double Bowl
Nautika
Undermount Sink

3
DRAWER
PULL
Richelieu

4
KITCHEN FAUCET
Moen Align Brushed
Gold Pulldown
Kitchen Faucet

5
BACKSPLASH
Olympia Colour & Dimension
Collection - Elongated
Hexagon - Arctic White

6
COUNTERTOP
Silestone
3cm Halcyon
Quartz

7
CABINETRY
Preston Satin
Thermofoil -
Daybreak

A SUMPTUOUS PRIMARY ENSUITE
YOUR COZY PRIVATE RETREAT

ENSUITE



ENSUITE CABINET & DRAWER

E.&O.E.

<p>1 CABINETRY Salem Maple Tuscan</p>	<p>2 COUNTERTOP Silestone 3cm Blanco Maple Quartz</p>	<p>3 FLOOR TILE Centura 13x13 Explorer - Milan</p>	<p>4 SHOWER WALL TILE 4x16 Essential - Horizontally Stacked - Bianco Glossy</p>	<p>5 DOOR PULL Berenson BP53721-G10</p>	<p>6 VANITY FAUCET Moen Vichy Chrome - Single Hole</p>	<p>7 SHOWER FIXTURE Moen Chateau Chrome</p>	<p>8 VANITY SINK ProFlo Undermount Sink</p>
---	---	--	---	---	--	---	---



- | | | | | | | | |
|---|---|--|---|---|--|---|---|
| <p>1
CABINETRY
Salem
Maple
Tuscan</p> | <p>2
COUNTERTOP
Silestone 3cm
Blanco Maple
Quartz</p> | <p>3
FLOORING
Centura 13x13
Explorer -
Milan</p> | <p>4
SHOWER WALL TILE
4x16 Essential -
Horizontally Stacked
- Bianco Glossy</p> | <p>5
DOOR PULL
Berenson
BP53721-G10</p> | <p>6
VANITY FAUCET
Moen Vichy
Chrome - Single
Hole</p> | <p>7
SHOWER
FIXTURE/TUB
Moen Chateau
Chrome</p> | <p>8
VANITY SINK
ProFlo
Undermount
Sink</p> |
|---|---|--|---|---|--|---|---|

ENJOY THE EASE AND LUXURY OF LIFE
WITH THE HELP OF **MODERN APPLIANCES**

APPLIANCES



E.&O.E.

1

WASHER
Whirlpool 5.0
C/F Front
Load Washer

2

DRYER
Whirlpool 7.4
C/F Front Load
Dryer

3

STOVE & OVEN
LG 30" Electric
Smooth Top
Range

4

DISHWASHER
LG 24" Built-In
Front Door Control
Dishwasher

5

REFRIGERATOR
LG 36" Counter
Depth French
Door Fridge



Congratulations On Selecting Your New eQ Home!



Melissa Gauthier,
Director, Sales & Design

1

Sign Agreement of Purchase & Sale with your eQ Sales Representative.

Provide deposit cheques or complete EFT form *(if applicable)*

2

Provide Mortgage Approval from your lender

3

5-day conditional period starts. Review Agreement of Purchase & Sale with your Solicitor.

4

Congratulations! Your new home purchase is now official and 5-day conditional period ends.

5

Receive access to your homeowner portal.

Your New Home Construction Starts



Peter Jury,
VP of Construction

1

Lot Walk. Meet the builder.**

2

Receive a progress photo from Customer Care.

3

Roof is on and shingled. Customer Care to send progress photo.

4

Frame Walk with Customer Care and Construction Representative.**

5

Walk-through for blinds and window coverings measurements.**

6

Homeowner Orientation (PDI).** Customer Care will walk you through your new home.

7

Register online for MyHome at Tarion.com.

8

Submit AVID Construction Survey.

Welcome Home!



Francesca Jacobs,
Customer Care Manager

1

Submit 30-day Tarion Warranty if necessary.***

2

Submit AVID Customer Satisfaction Survey (30 days after closing).

3

Submit AVID Customer Satisfaction Survey (30 days after closing).

4

Submit 2-year Tarion Warranty if necessary.***

5

3 to 7-year Tarion Warranty

Here's How We Bring You Home

This event may be in-person or virtual. If you have opted in to attend this appointment, an eQ Homes representative will contact you to confirm the details. *See your Tarion Warranty for details.



JAMES PATERSON
New Home Sales Consultant

74 Equinelle Drive, Kemptville, ON
(off County Road 44)
TEL: 613-258-6488
EMAIL: JPaterson@eqhomes.ca



All drawings are artist's concept and may vary slightly from the final product. Actual usable floorspace may vary from stated area, and square footage has been calculated based on usable living space according to the TARION rules and does not include garage or unfurnished basement areas. Drawings may show optional features which may not be included in the base price. Bulkheads & box outs may be required as chases for plumbing & mechanical. Garage main door location, if applicable, may vary subject to grade. In an ongoing review of homeowner's needs, changes may have been incorporated into our "New Home Features" and construction techniques. Specifications subject to change without notice. Manufacturers' images are shown and may differ from the final product. E. & O.E. September 2023.